

2803/105  
CLOTHING CONSTRUCTION I  
PRACTICAL  
Oct./Nov. 2018  
Time: 6 hours



THE KENYA NATIONAL EXAMINATIONS COUNCIL

DIPLOMA IN FASHION DESIGN AND CLOTHING TECHNOLOGY

MODULE I

CLOTHING CONSTRUCTION I PRACTICAL

6 hours

INSTRUCTIONS TO CANDIDATES

1. You should have the following for this examination:
  - (i) plain light weight fabric  $6\frac{1}{4}$  metres long by 114 cm wide;
  - (ii) fusible interfacing 40 cm by 52 cm;
  - (iii) thread to match the fabric;
  - (iv) brown papers;
  - (v) one large envelope;
  - (vi) one button 1.5 cm diameter without a shank;
  - (vii) sewing tools.
  
2. At the end of the examination:
  - (a) stitch on a label bearing your name and index number on a single layer of fabric without concealing any details.
  - (b) enclose the garment in the large envelope provided.

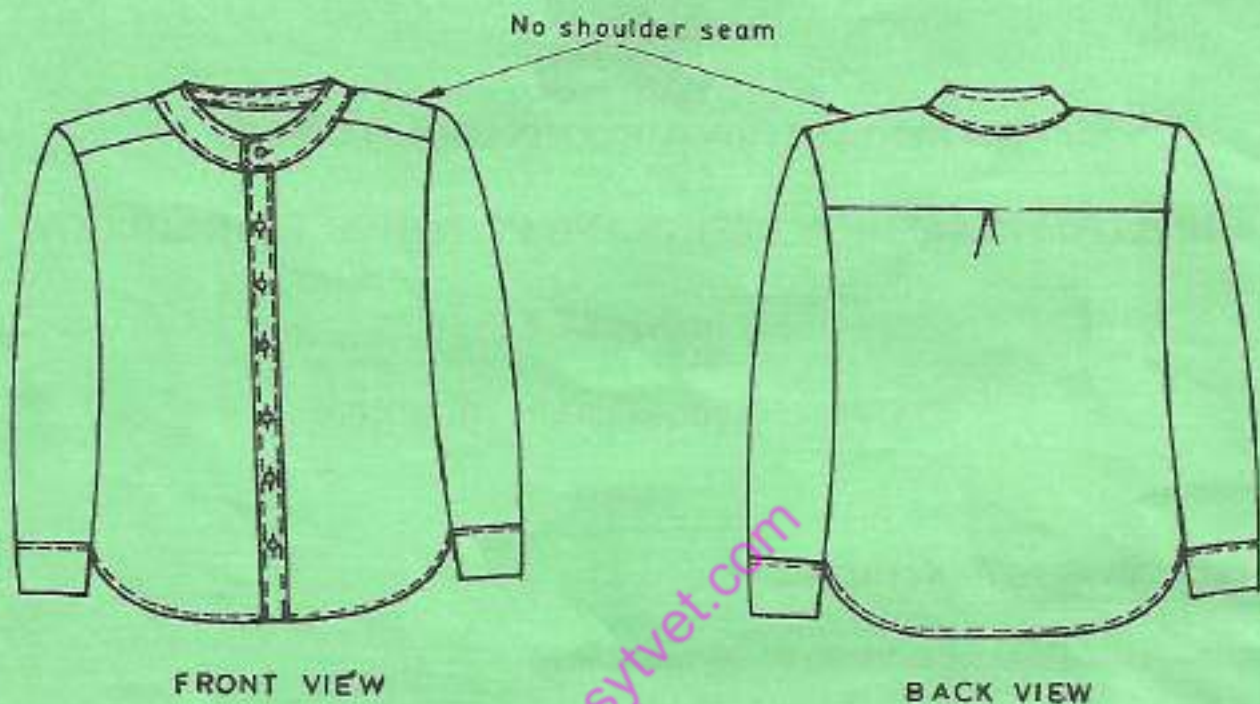
This paper consists of 2 printed pages.

Candidates should check the question paper to ascertain that both pages are printed as indicated and that no questions are missing.

## TASKS

Using the measurements and the materials provided, cut out and make the shirt style sketched below as follows:

- (i) use the double stitched seam at the underarms and the sides,
- (ii) make one handworked buttonhole at the collar and sew on the button.



### MEASUREMENTS

Chest	-	79 cm
Across back	-	32.8 cm
Seat	-	82 cm
Neck size	-	34 cm
Shoulder	-	12 cm
wrist	-	24 cm
Seye depth	-	19.6 cm
Back neck to waist	-	36.4 cm
Turn-up depth	-	5 cm
Full length	-	49 cm
Sleeve length	-	48 cm

**THIS IS THE LAST PRINTED PAGE.**